

New Areas in the Sensing Business

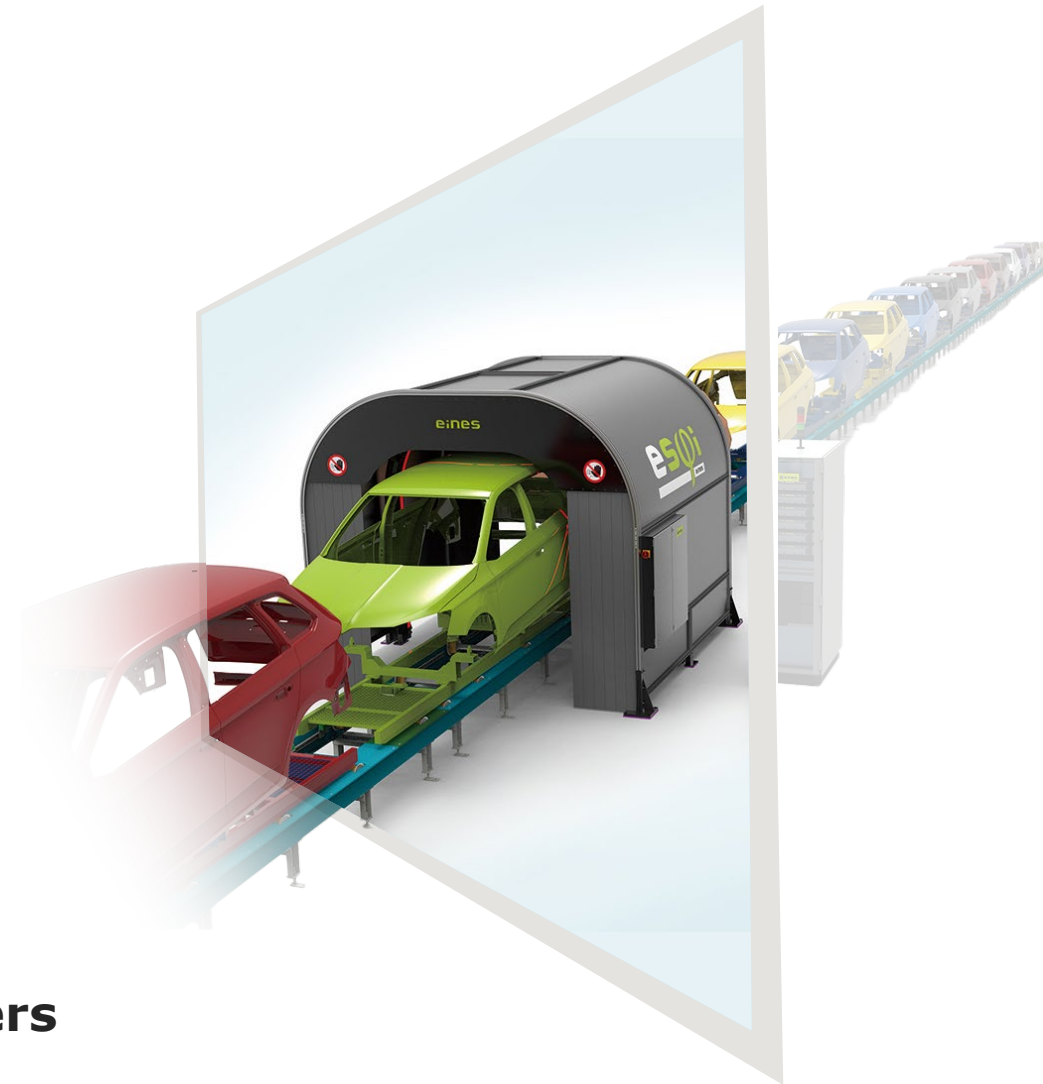
Automotive Visual Inspection Business

October 10, 2023

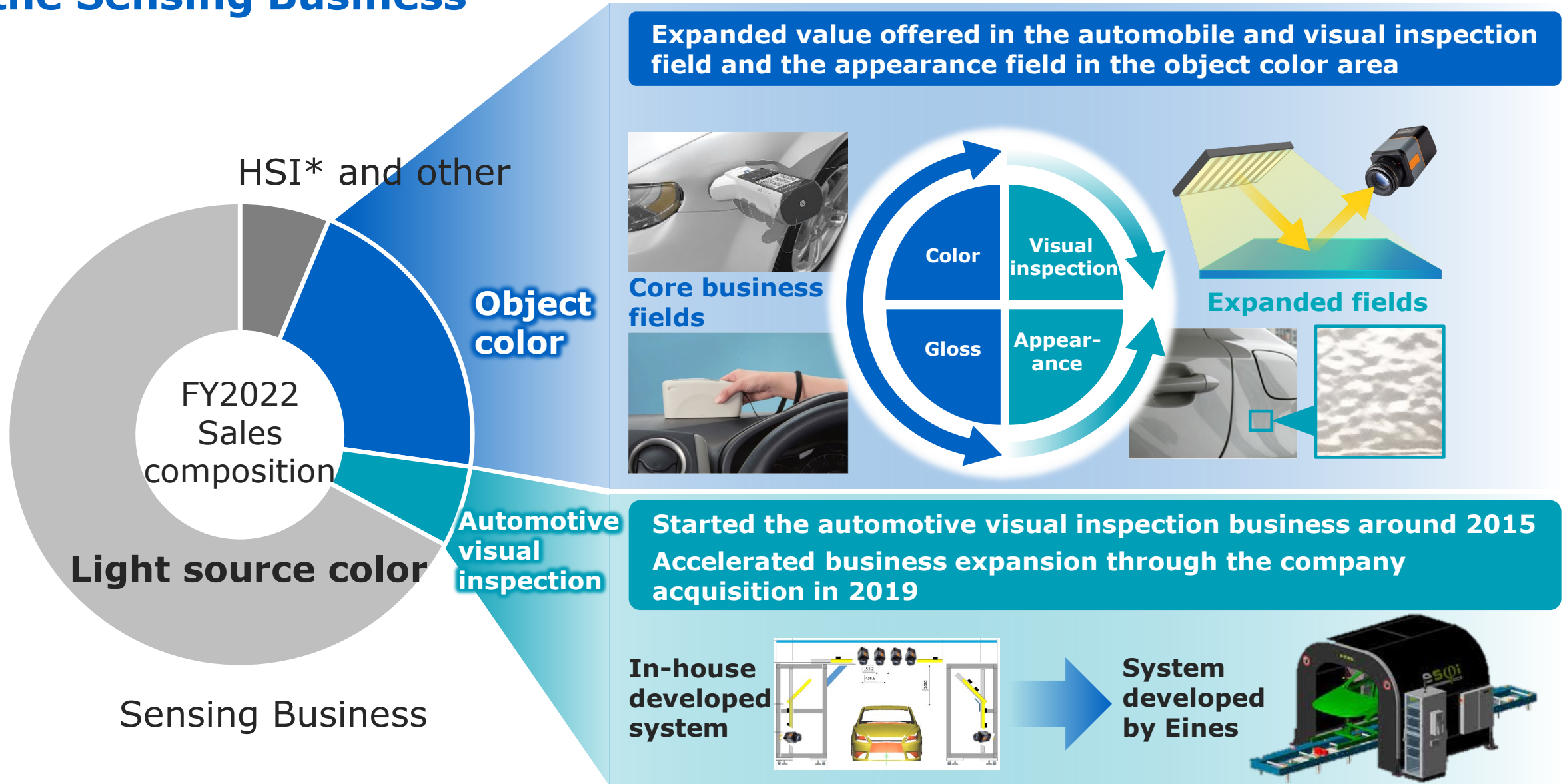
Kentaro Mikami

Corporate Vice President

Division President of Sensing Business Headquarters



Positioning of Automotive Visual Inspection Business in the Sensing Business



HSI*: Hyper Spectral Imaging

Overview of Eines Systems S.L.



Founded: 1992
Headquarters: Valencia, Spain
Number of employees: 104 (as of July 31, 2023)

Leading company of automotive visual inspection systems
Supports quality assurance of more than 8 million major automakers' vehicles a year by leveraging their extensive insight into automotive factory automation and product development capabilities tailored to customer needs



**Joined
Konica Minolta Group in 2019**

Value offered for customers



**World-class
automotive visual
inspection quality**



**Enhance brand
image through
improved quality**



**Improve customer
satisfaction for
auto companies**



Concluded an acquisition agreement between Konica Minolta and Eines

Eines Systems Company History

1

Founding period

Developed customer-focused value in Valencia, Spain

2

Growth period

Captured major European customers using the success in Spain as a springboard

3

Expansion period

Expanded globally under the umbrella of Konica Minolta

1992 Founded as a start-up company with 5 founders



Ford
Valencia

2000s



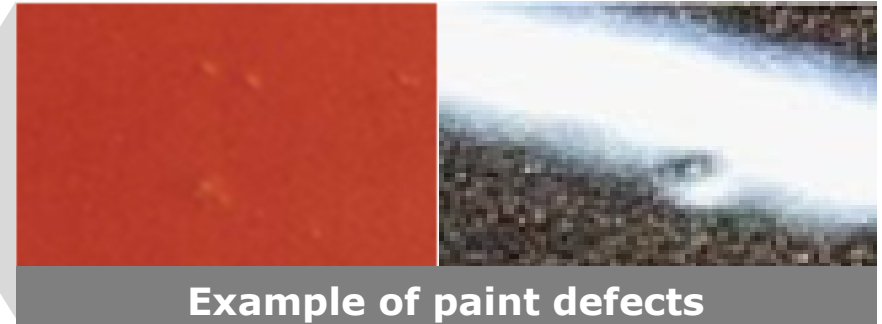
2019

Joined Konica Minolta Group



esφi

Tunnel-type inline Surface Paint Quality Inspection System



eiφis

Tunnel-type inline Flush and Gap Inspection System



esφi = "EINES® Surface - Paint Quality Inspector"

eiφis = "EINES® Inline Flush & Gap Inspection System"

Automotive Visual Inspection: Customer Challenges

Automotive visual inspection involves a high degree of difficulty

Many different car models, designs, and colors

Large body sizes

Microscopic defect detection

Moving production lines

Difficult to automate and depends on human labor
Skilled workers required



High demand for auto visual inspections over the years

Automotive Visual Inspection (Surface paint quality inspection): Provision of Values

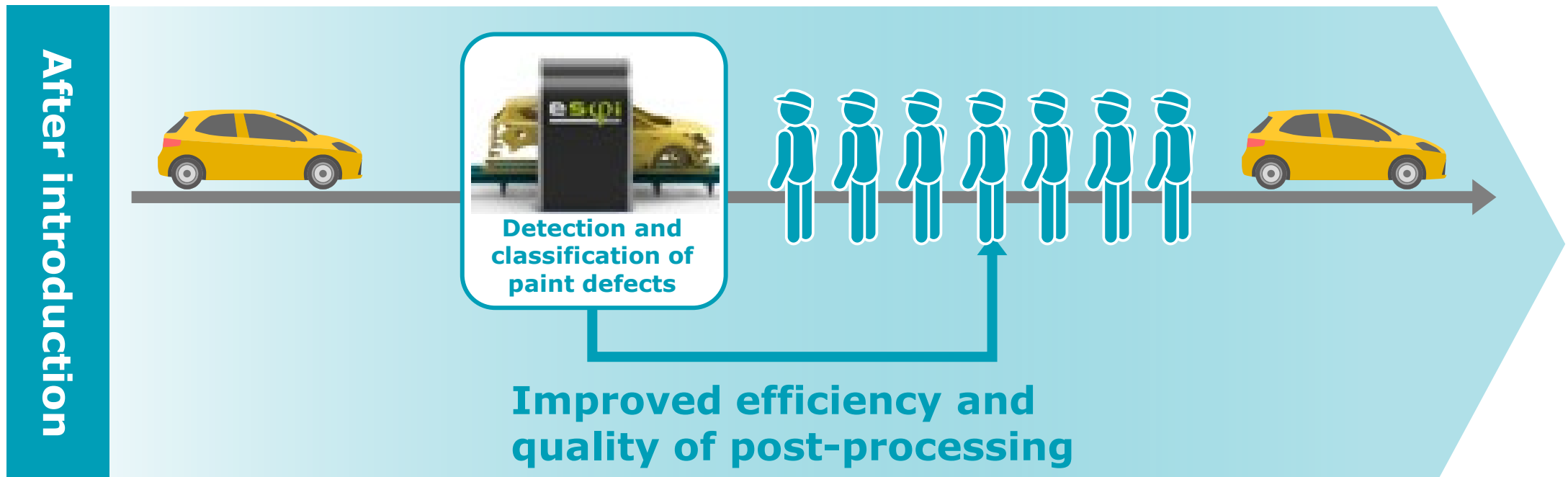
By automating visual quality inspection on the production line

Labor saving

Human error reduction

Skilled workers not required
(no training needed)

Reduced work hours by **two-thirds**
(past case study)



[Video] Surface Paint Quality Inspection System

Video projected only at the venue

Automotive Visual Inspection Business: Toward the Market Expansion Period

The market enters a period of expansion following a rebound in auto companies' investment, which had been curbed due to the COVID-19 pandemic.

Leveraging the Group's sales networks and customer assets, we will expand our businesses from Europe to China, Japan, Asia, and North America.

Automotive visual inspection market (2025)
Market scale: ¥15 bn CAGR: 15% or more

*Estimated by Konica Minolta



Sales networks



Customer assets



Enhancement of Added Value through Technological Synergies

Enhance Eines' strength in products by leveraging our optical and imaging-AI technologies
Deepen cooperation with customers and continue to evolve further



eines
VISION SYSTEMS

+



KONICA MINOLTA

 **Optical
technology
Imaging-AI
technology**

Strengthen solutions



Improve inspection precision

Improve detectability

Improve efficiency of AI-based defect classification

Achieve high-precision classification performance

Shorten installation time

Ensure improvement of over 20%

**Work with customers/
partners**

Use DX to enhance added value



Auto defect repair

Collaboration using defect classification data

Improve processes with data analysis

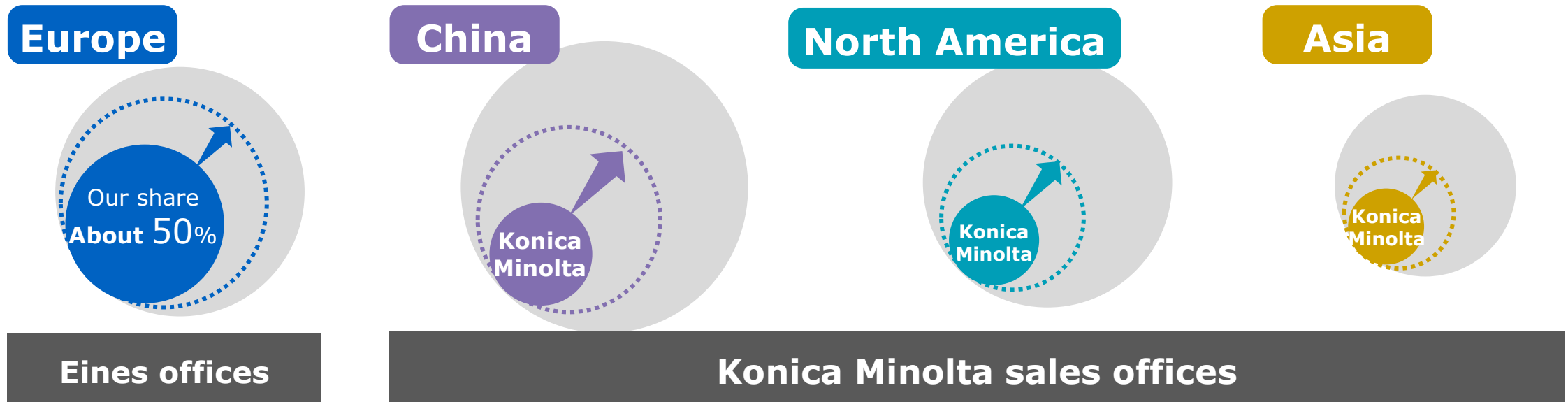
Started discussions and considerations

Automotive Visual Inspection Business: Market Share and Business Opportunities

- Acquired high market share in Europe, attracting inquiries from luxury car brands
- In China, cultivate new customers and deploy new solutions
- In North America and Asia, expand our market share through close contacts with our customers by leveraging our sales base.



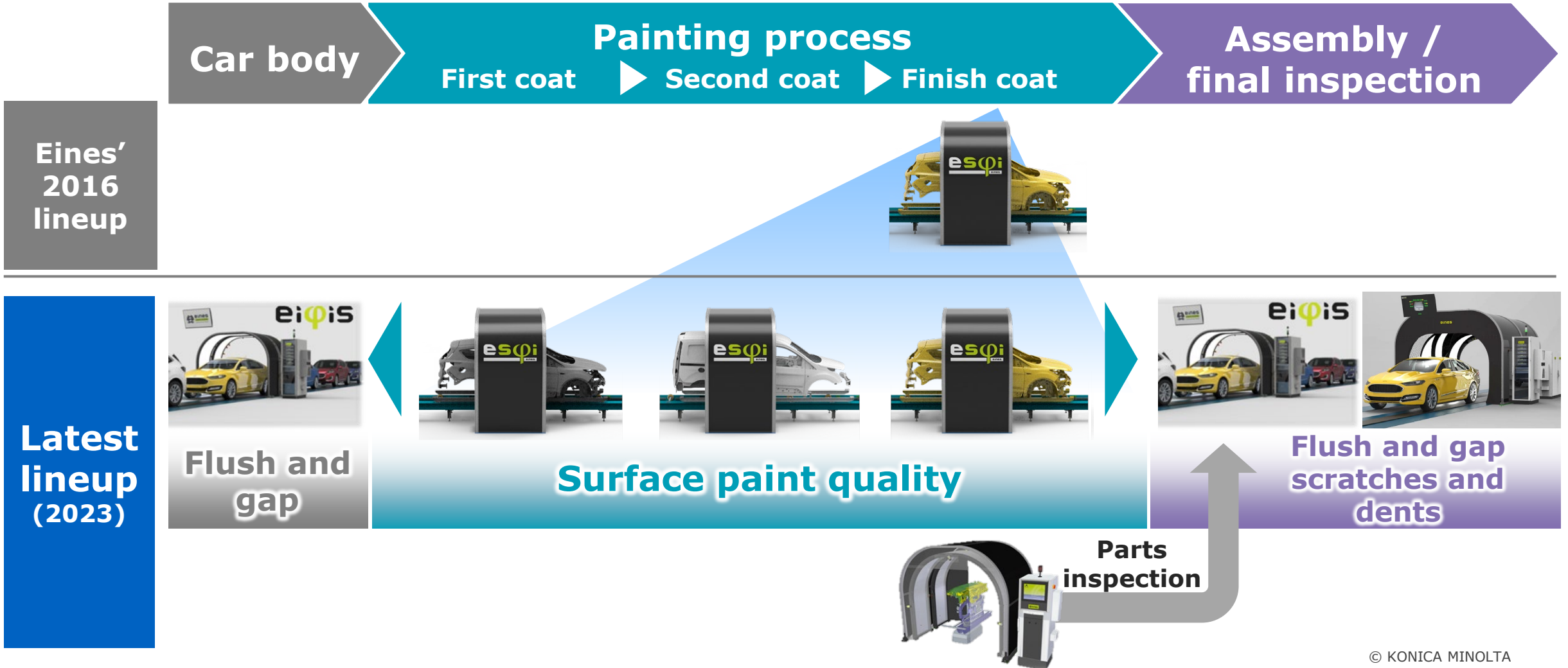
Image of the Tunnel-type solution's market share



● Current ◌ Medium-term target ● Whole market (estimated by Konica Minolta)

Automotive Visual Inspection Business: Toward Further Growth (Tunnel-type solution)

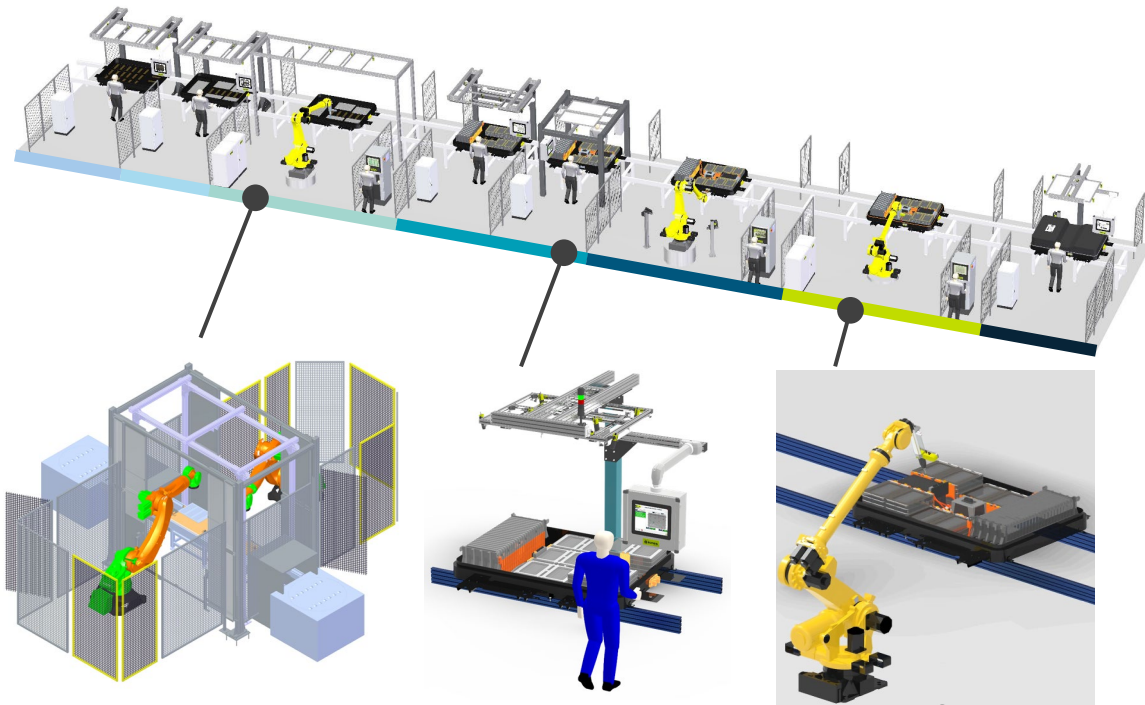
We adopt the tunnel-type solution, which was initially designed for a finish-coating process for car painting, to customer needs and deploy the solution in three ways: painting process, other processes, and parts.



Automotive Visual Inspection Business: Toward Further Growth (excluding the Tunnel-type solution)

Solutions for electric vehicles (EVs)

Provide optimal inspection solutions through close contacts with customers



Battery cooling plate inspection

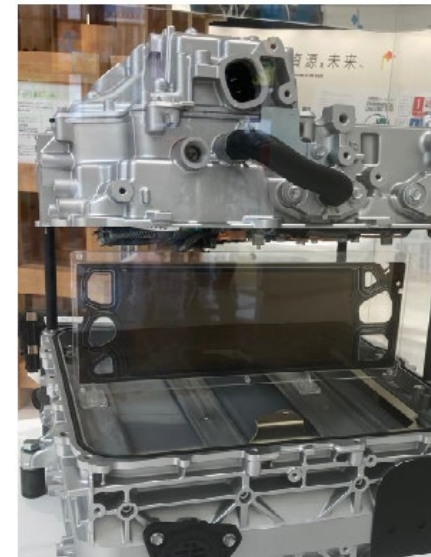
Housing position measurement

Sealing aligned to the position

EV = Electric vehicle

Solutions for fuel cell applications

Detect part defects with high sensitivity camera system



Software / lighting

Radiant Vision Systems, LLC

Location: Redmond, Washington, U.S.A.

Business activities: Development and sales of measuring instruments for display products

Joined Konica Minolta Group in August 2015

Separator

*Displayed in Toyota Kaikan Museum

Eines makes automotive visual inspections more efficient through automation, which previously relied on the human eye, thereby creating and driving the visual inspection market.

Although the market was affected by the COVID-19 pandemic, we expect the market to expand in the future from a focus on Europe and the U.S. to a global market, reflecting a recovery in investment by automotive companies.

Konica Minolta and Eines will expand offered value for customers through technology and sales synergies and accelerate business expansion globally.



KONICA MINOLTA

150

YEARS

Appendix



- **Light source color**

The brightness and color of a light source that itself emits light such as lighting and displays.

- **Object color**

The brightness and color of objects that themselves do not emit light such as auto parts and food products.

- **Appearance**

An element in the object color field that indicates differences in appearance due to surface conditions other than color. Typical examples include the orange peel finish of car paints.

- **HSI**

Hyper Spectral Imaging (HSI) is an imaging technique in which a wide range of wavelengths are divided into multi-wavelengths. This technique can be used to sort different types of plastics that cannot be identified by the human eye or an RGB camera.