

Without Heater With Heater Digital Wave Form Analogue Wave Form

Water-based	UV	Solvent	Ink Type	Drop Size	Nozzle Number	Driving Mode	Shear 3-cycle		Shear Independent			Bend				
							M	S	L	M	S	L	800	1600		
					512	Shear 3-cycle										
					1024	Shear 3-cycle										
					512	Shear Independent										
					1024	Shear Independent										
					>1024	Shear Independent										
					800	Bend										
					1600	Bend										

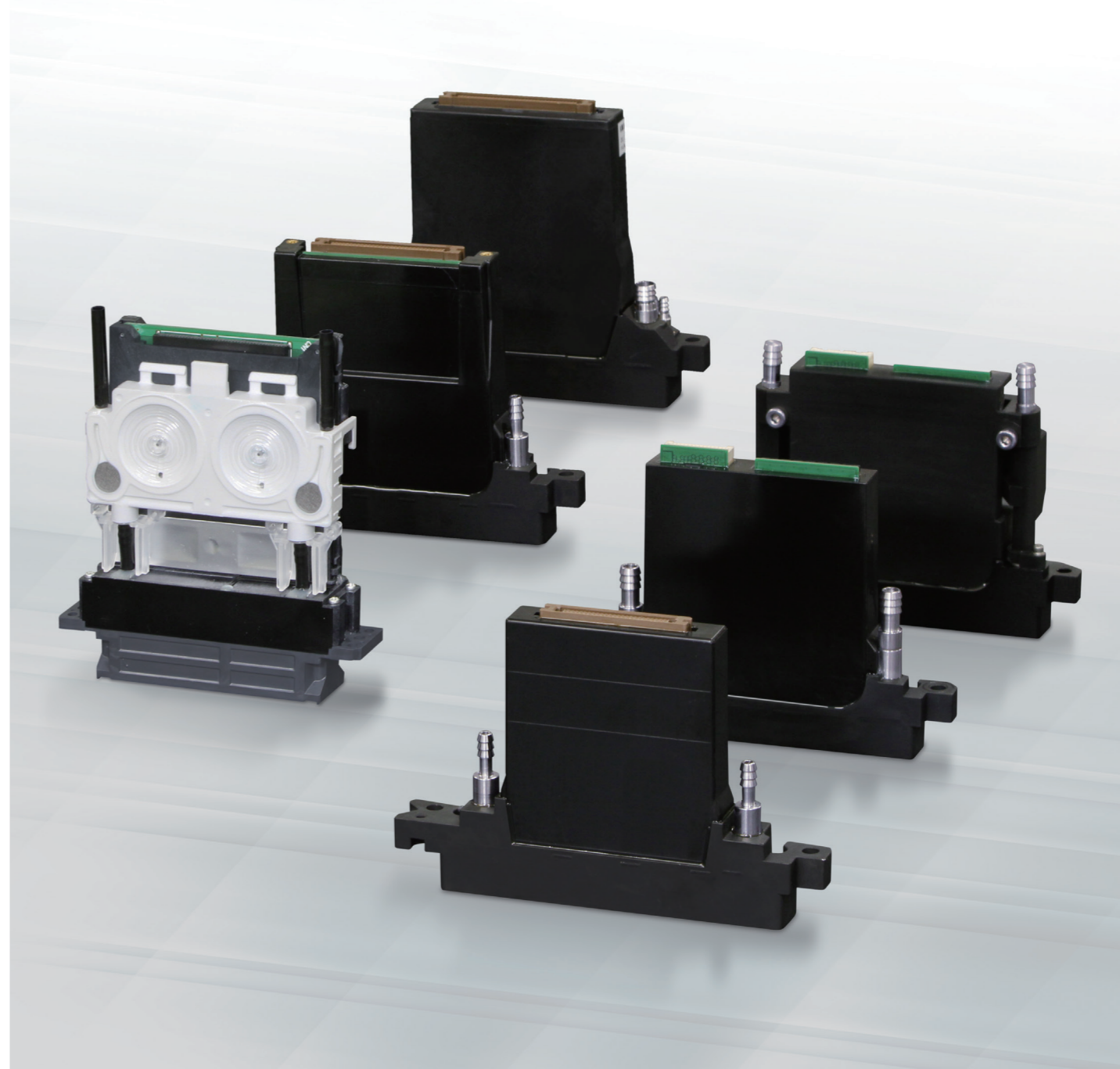


Inkjet Printhead

Lineup Catalog

150
YEARS

Konica Minolta's Inkjet Print head Series



KONICA MINOLTA, INC. Inkjet Business Unit

No.1 Sakura-machi, Hino-shi, Tokyo 191-8511, Japan
Tel: +81-42-589-3701 Fax: +81-42-589-3865



<https://www.konicaminolta.com/global-en/inkjethead/index.html>

Giving Shape to Ideas

Products you can rely on for High-Performance Printing

Konica Minolta Inkjet Print head Series

Inkjet Print head Series Lineup

Konica Minolta's inkjet printheads boast high speed and high density to better respond to varied throughput and resolution needs with a combination of droplet size and numbers of nozzles.

A Wide Range of Solutions Covering User Applications

The reliability enjoyed with Konica Minolta printheads is the direct result of high-level nozzle processing precision and material compatibility based on our own material technology. This ensures that these devices are suitable for diverse user applications, from high-quality graphic printers to PCB, LCD, OLED and other electronic applications.

Designed to Contribute to the Development of Print Systems

Konica Minolta will offer effective solutions to customers in development of print systems. Inkjet print heads with our own technologies and reliability provide new opportunities and more value for industrial printing.

Shear Mode (3-cycle)

		KM512SHX	KM512MN KM512MH	KM512LN KM512LH	KM1024SHB	KM1024MNB KM1024MHB	KM1024LNB KM1024LHB
Wave Form		Digital	Digital	Digital	Digital	Digital	Digital
Number of Nozzles		512	512	512	1024	1024	1024
Frequency (kHz)		20	12.8	7.6	27	12.8	6.7
Printing Width (mm)		36	36	36	72	72	72
Drop Size (pl)		4	12	42	6	14	42
Resolution (npi)		360	360	360	360	360	360
Grey Scale (levels)		4	4	1	8	4	2
Ink Type	Water-Based						
	Solvent	○	○	○	○	○	○
	UV	○	○ (KM512MH)	○ (KM512LH)	○ (KM1024SHB)	○ (KM1024MHB)	○ (KM1024LHB)
Dimensions (mm)		67 × 40 × 63	67 × 40 × 63	67 × 40 × 63	131 × 17.5 × 90	131 × 17.5 × 90	131 × 17.5 × 90
Weight (g)		95	95	95	150	150	150

Shear Mode (Independent)

		KM512iLNB-30	KM1024iSHE	KM1024iMHE-D	KM1024iLHE-30	KM1280iMHH	KM1800iSHC-C	KM512iMAB-C	KM1024iSAE-C	KM1024iMAE-C	KM1024aSHE	KM1024aLHG-RC	KM800	KM800-D	KM1600
Wave Form		Digital	Digital	Digital	Digital	Digital	Digital	Digital	Digital	Digital	Analogue	Analogue	Analogue		Analogue
Number of Nozzles		512	1024	1024	1024	1280	1776	512	1024	1024	1024	1024	800		1600
Frequency (kHz)		27	56	45	27	45	87	20	43	27	56	26	Multi-drop:18.2		
Printing Width (mm)		72	72	72	72	72	75	72	72	72	72	72	56.4		
Drop Size (pl)		30	6	13	30	10	3.5	13	6	14	6	27	5-22		
Resolution (npi)		180	360	360	360	450	600	180	360	360	360	360	360		720
Grey Scale (levels)		8	8	8	8	16	8	8	8	8	8	8	4		
Ink Type	Water-Based							○	○	○		○	○		
	Solvent	○	○	○	○	○	○				○	○	○		
	UV		○	○	○	○	○				○	○			
Dimensions (mm)		131 × 18 × 90	131 × 18 × 94	131 × 18 × 94	131 × 18 × 94	131 × 18 × 105	138 × 20 × 107	131 × 18 × 90	131 × 18 × 94	131 × 18 × 94	131 × 18 × 91	131 × 20 × 100	99 × 18.8 × 109.4		101.5 × 69.8 × 112.4
Weight (g)		130	150	150	150	185	210	140	150	150	150	190	100	120	350

Bend Mode