



KONICA MINOLTA

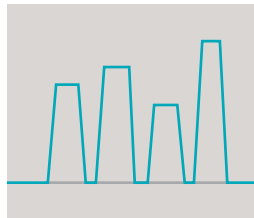
KM1024aSHE KM1024aSAE-Q

Delivering High Productivity, Reliability and Quality for Industrial Applications.



High Productivity Analogue Waveform

Adopting analogue waveform that can achieve high productivity and print accuracy in multiple drops. High flexibility to optimize the waveform for individual inks. 6pl / 40kHz, 20pl / 22kHz is achievable.



Water Based Ink Support

Chemical compatibility with water based ink in KM1024aSAE-Q.



Compact Print Head

Light weight (150g) and compact (17.6mm wide) print head enables compact printer design. Mechanical compatibility with KM1024i series print heads.



Robust Nozzle Plate

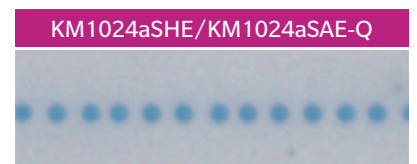
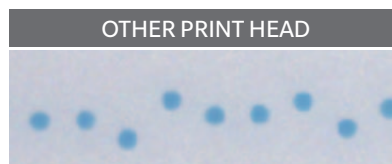
New nozzle plate material with even higher scratch resistance around 100 times* better than the previous version.

*Based on internal measurement



High Drop Accuracy

Introduced a new production method to optimize the drop velocity for individual nozzles. Analogue waveform also enables improved drop accuracy.



Covering wide range of applications



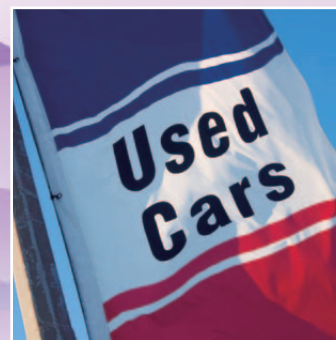
PCB



Textile



Sign & Graphics



Flags / Banners

Specification

Model Name	KM1024aSHE/KM1024aSAE-Q
Drive Mode	Independent
# of nozzle	1024
Print width (mm)	72
Head dimensions	W: 131.2mm × D: 17.6mm × H: 97mm
Regular jetting frequency (kHz)	40kHz (Binary) 22kHz (4dpd)
Drop volume (pL)	6pl (Binary) 20pl (4dpd)
Jetting temperature	RT - 55°C
Internal heater	Available
Ink Type	Solvent, UV, Oil, Water based (Water based only for 1024aSAE-Q)
Ink Viscosity (mPa·s)	7-10
Waveform	Analogue
Weight	150g
Grey scale level	8 Level

2D Design

